

PATIENT ASSESSMENT

Scene Size-Up

Big decisions that affect the entire call.

1

Is it SAFE?

Call for Police?

2

Do I need HELP?

ALS Extrication
Fire Dept Haz Mat

3

How many PATIENTS?

Call for Help
Triage Mode

4

OBSERVE Patient

MOI (c-spine?) or NOI

Your first look
at the patient

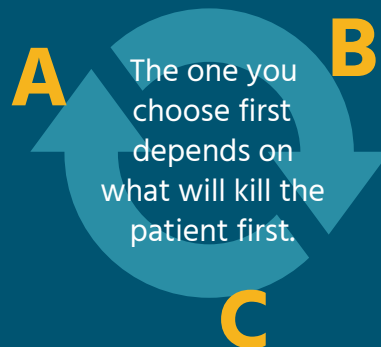
General Impression
Chief Complaint

Get a general sense of
problems and priorities

Primary Assessment

What immediate actions are necessary to keep the patient alive?

Some patients NEED only
minimal assessment and care
in primary assessment.



NOTE: AHA says when a
patient appears lifeless
use C-A-B approach

HOW SICK IS YOUR PATIENT?



Crashing
Unstable



Load and Go

Time Sensitive Issue
(MI/Stroke)



Transport Promptly

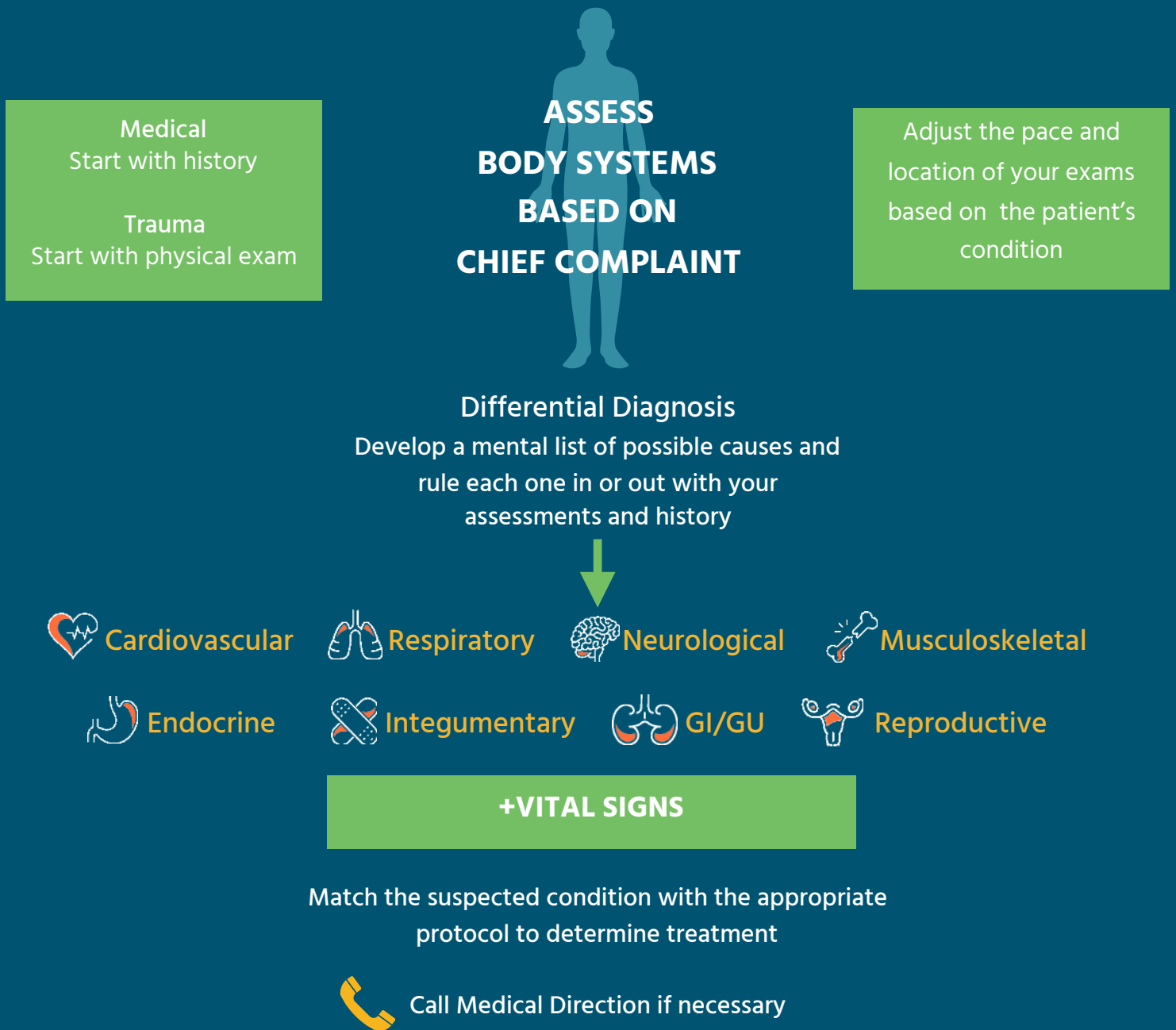
Stable
Not Time Sensitive



Secondary assessment on scene

Secondary Assessment

Perform a history, physical exam, and vital signs to determine what treatments (if any) are appropriate.



Reassessment

Is the patient getting better, worse or staying the same?

Reassess

- Patient complaint
- Vital signs & Mental status
- Treatment provided