

# PATIENT ASSESSMENT

## Scene Size-Up

Big decisions that affect the entire call.

1

Is it SAFE?

Call for Police?

2

Do I need HELP?

ALS      Extrication  
Fire Dept      Haz Mat

3

How many PATIENTS?

Call for Help  
Triage Mode

4

OBSERVE Patient

MOI (c-spine?) or NOI

Your first look  
at the patient

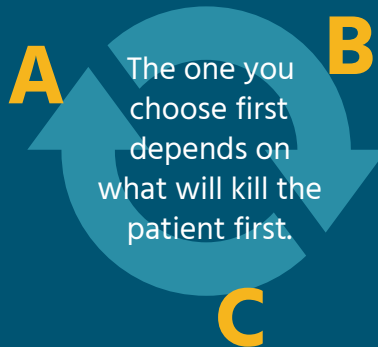
**General Impression**  
**Chief Complaint**

Get a general sense of  
problems and priorities

## Primary Assessment

What immediate actions are necessary to keep the patient alive?

Some patients NEED only  
minimal assessment and care  
in primary assessment.



NOTE: AHA says when a  
patient appears lifeless  
use C-A-B approach

## HOW SICK IS YOUR PATIENT?



Crashing  
Unstable



Load and Go

Time Sensitive Issue  
(MI/Stroke)



Transport Promptly

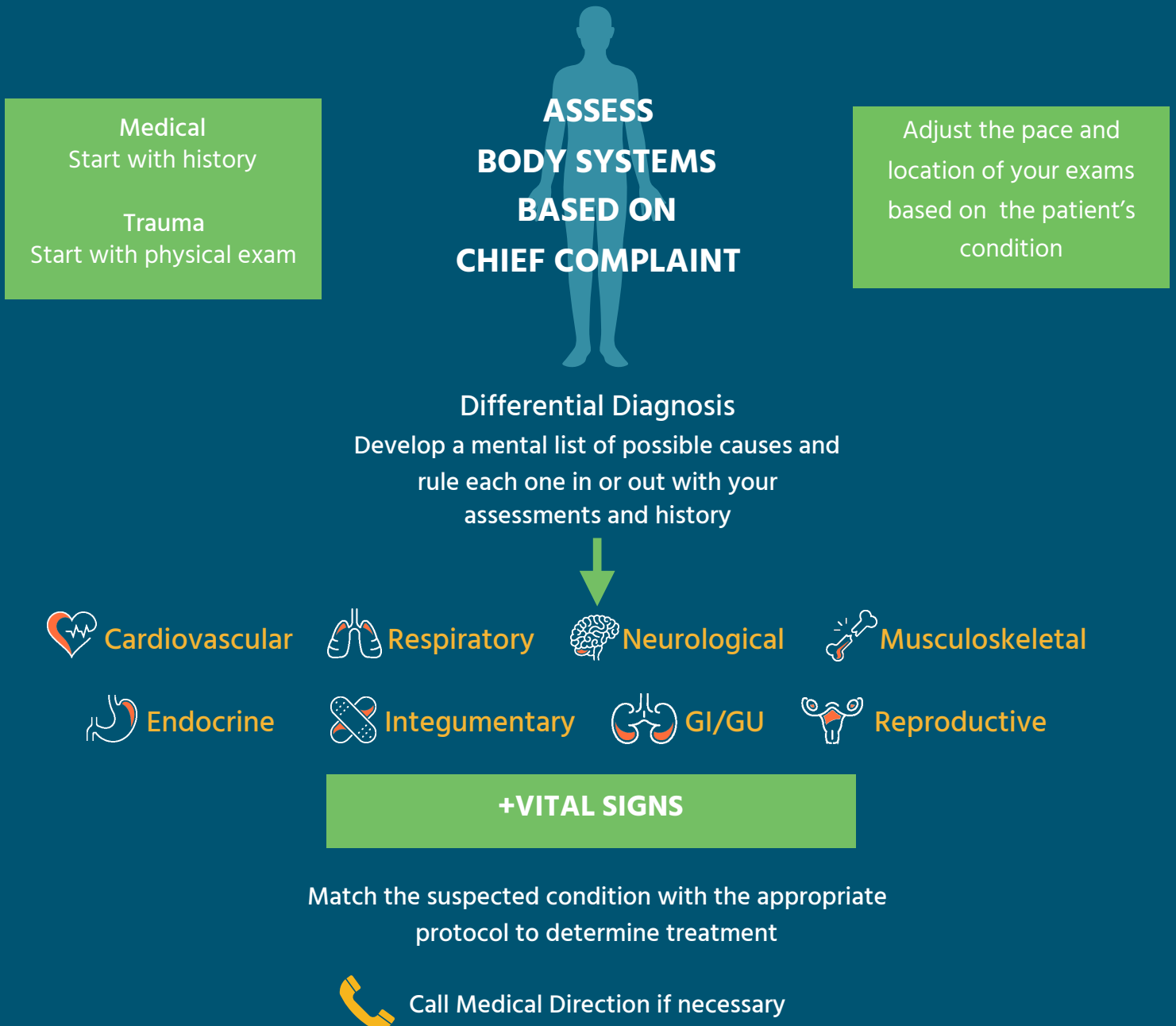
Stable  
Not Time Sensitive



Secondary assessment on scene

# Secondary Assessment

Perform a history, physical exam, and vital signs to determine what treatments (if any) are appropriate.



## Reassessment

Is the patient getting better, worse or staying the same?

### Reassess

- Patient complaint
- Vital signs & Mental status
- Treatment provided